

Frog Court Wetland Upgrade

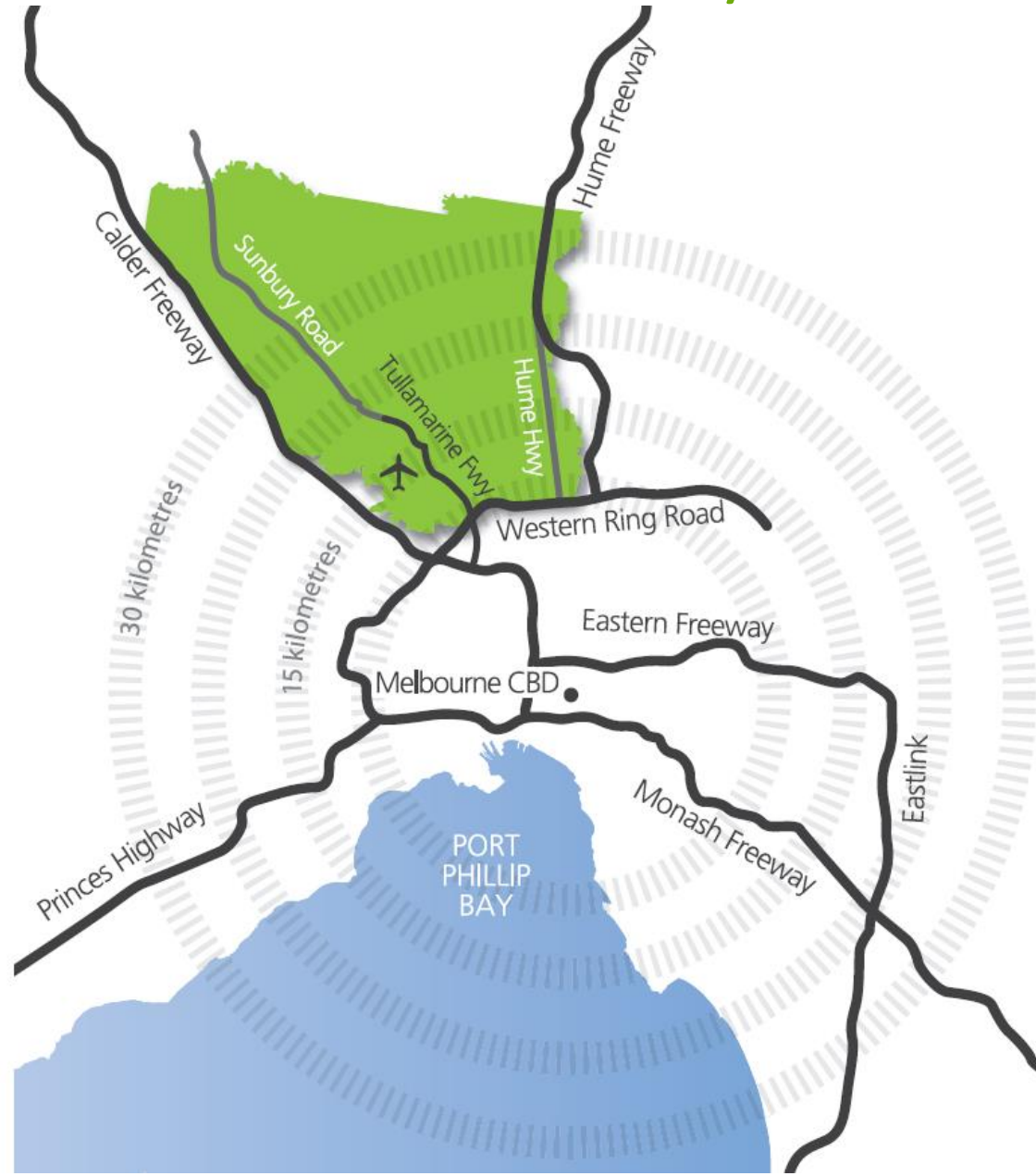


Angela Ganley
Senior Sustainable Environment Officer

Presentation Overview

- Background to Frog Court project
- Design Solution
- Funding
- Construction, including GPT Cleanout
- Post-Construction Issues – No Rain and Industrial Pollution

About Hume City Council



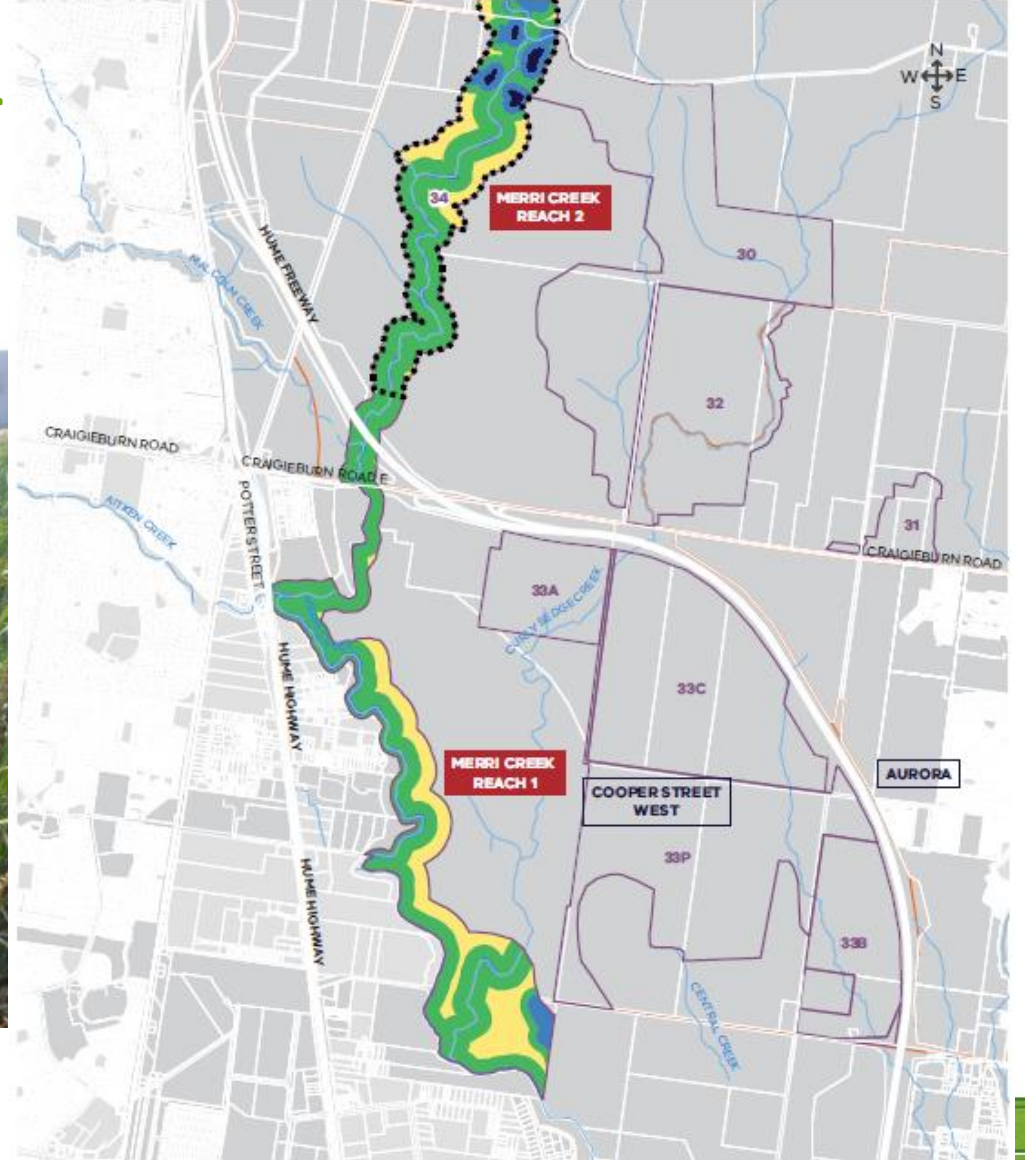
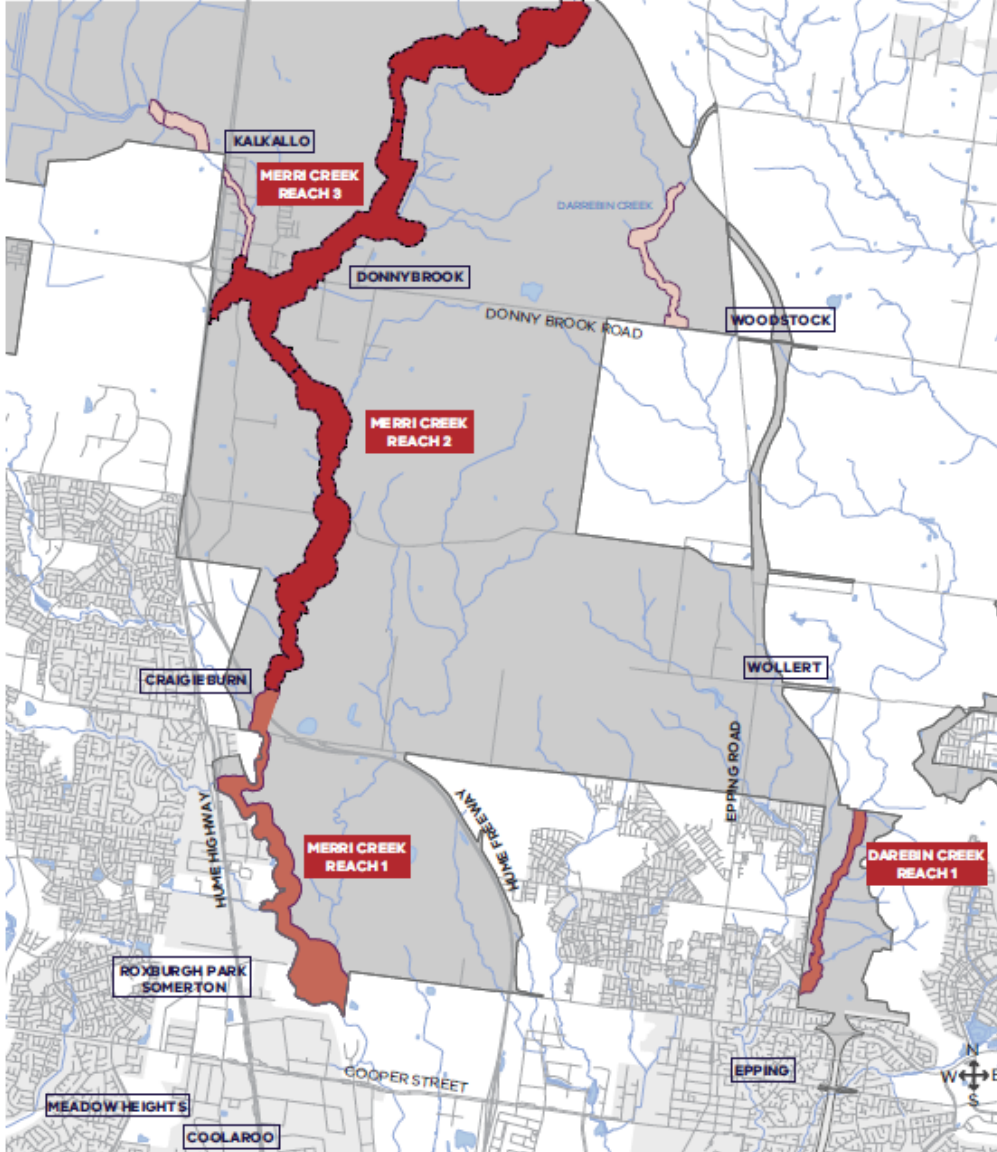
Frog Court Wetland



Frog Court – Stormwater Treatment



ng Gr



Site Issues



Design Solution



The Search for Funding

- Melbourne Water Living River – design phase
- Growling Grass Frog Trust – managed by Trust for Nature. Includes Friends of Merri Creek and DELWP on the board
- Yarra Valley Water – free water for plant establishment
- Council funded the remainder

GPT – First Recorded Clean



Construction



Post Construction - Needs Rain



Post Construction – Industrial Pollution



Post Construction – More Industrial Pollution



Ongoing Monitoring

- Ongoing monitoring program during Growling Grass Frog breeding seasons
- On-site contractors and Council staff visually monitor industrial pollution

Lessons Learned

- Communicate your project to regulators, even if you don't need an approval
- Difficult to control pollution events in industrial catchments
- Consult widely during project planning to combine multiple objectives and funding streams

Thank-you

Angelag@hume.vic.gov.au

